



Bloom

AT EDENGLIN

Brookfield
Residential

Exterior Elevations



**5 PLEX
ELEVATION A - CRAFTSMAN**



**5 PLEX
ELEVATION B - SPANISH**



**6 PLEX
ELEVATION A - CRAFTSMAN**



**6 PLEX
ELEVATION B - SPANISH**



**7 PLEX
ELEVATION A - CRAFTSMAN
(AS MODELED)**

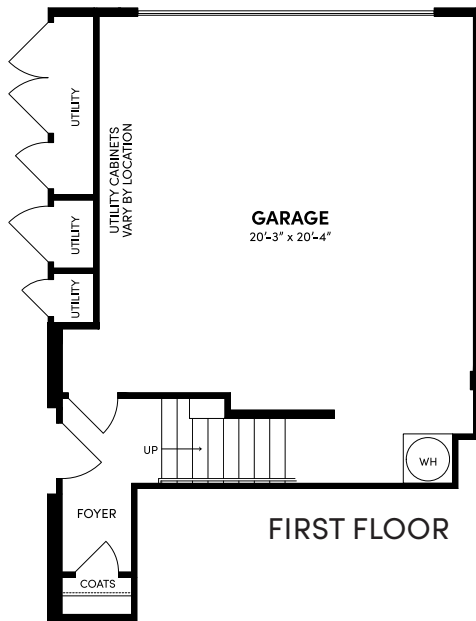


**7 PLEX
ELEVATION B - SPANISH**

Renderings are an artist's conception and are subject to change. Not all exterior building types are shown. For complete details and the most up-to-date information, please consult with a Brookfield Residential sales representative.

Plan 1

1,074 Sq. Ft.
2 Bedrooms • 2 Baths
Covered Deck
2-Car Garage

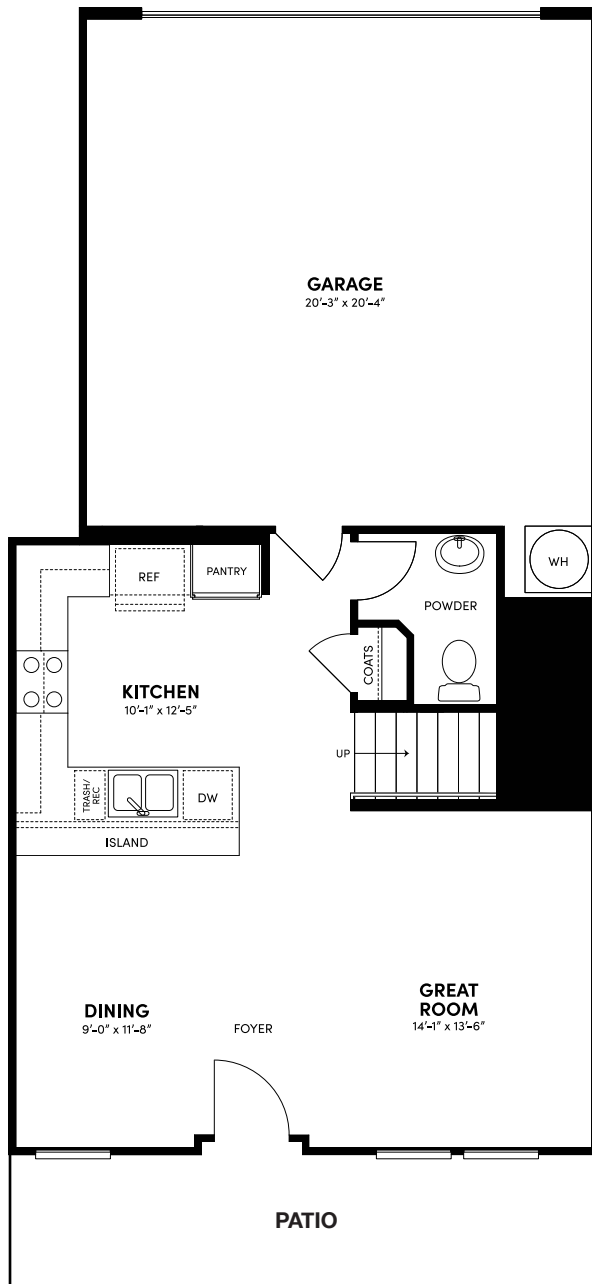


ELEVATION A AS MODELED

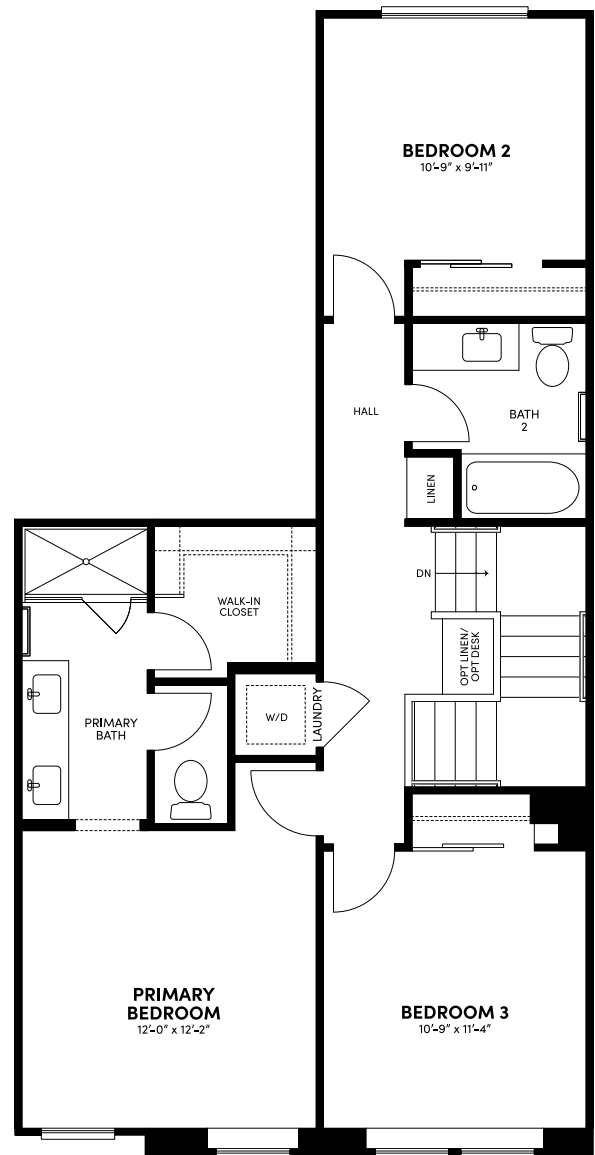
All square footage is approximate. Windows and doors vary by elevation. Stated dimensions are approximate estimates and not intended for space planning purposes. See a Brookfield Residential representative for details.

Plan 2

1,314 Sq. Ft.
3 Bedrooms • 2.5 Baths
Patio
2-Car Garage



FIRST FLOOR



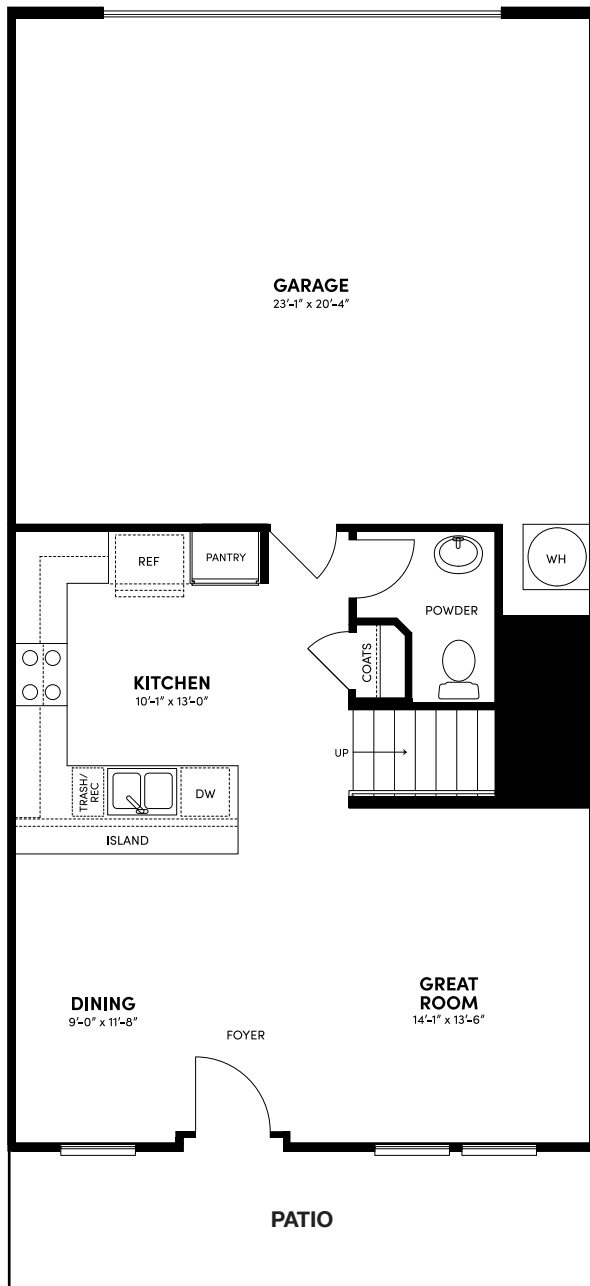
SECOND FLOOR

ELEVATION A AS MODELED

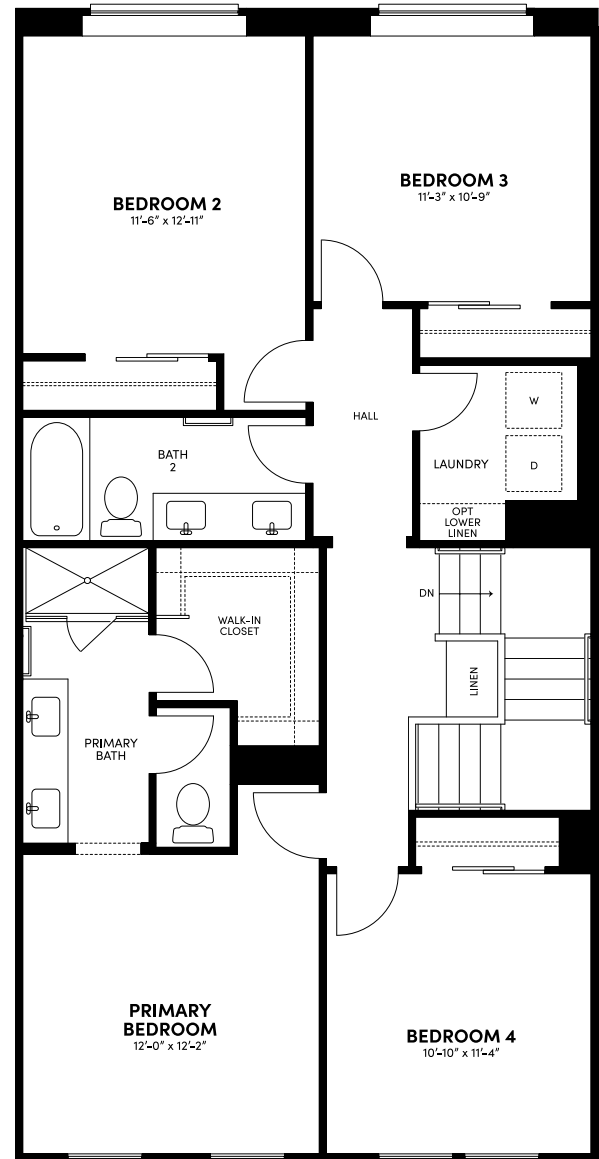
Patio spaces vary by location. All square footage is approximate. Windows and doors vary by elevation. Stated dimensions are approximate estimates and not intended for space planning purposes. See a Brookfield Residential representative for details.



ELEVATION A AS MODELED



FIRST FLOOR



SECOND FLOOR

ELEVATION A AS MODELED

IT'S ALL *in the* DETAILS



EXCEPTIONAL EXTERIORS

- A stylish street scene comprised of charming exteriors that feature Craftsman and Transitional Spanish inspired architecture with handsome details including vertical and horizontal siding, and decorative gable vents (varies per elevation)
- Decorative exterior light fixtures that coordinate with architecture style and illuminated address signs
- Inviting, low-maintenance 8' entry doors featuring Schlage Encode Plus™ Smart WiFi Deadbolt in matte black
- 5" pre-finished seamless aluminum rain gutters with downspouts at select locations
- Fully dry-walled garage with stylish sectional roll-up door and LiftMaster® WiFi-enabled opener (supports Amazon Key)
- Cozy covered decks and inviting front porches (at select plans/locations)

STYLISH LIVING SPACES

- Energy efficient LED surface mounted disk lighting with rocker switches in select living areas
- J-box with dimmers in Great Rooms and Primary Bedrooms for future pendant light/fan
- Clean-lined square wall corners
- Decorative door casings and elevated 2 ¼" baseboards throughout

- Sherwin-Williams® paint throughout
- Contemporary two-panel interior doors with aged bronze hardware (Schlage Latitude hardware in matte black at Plan 3X only)
- Primary Baths feature cultured marble countertops with 4" backsplash, oval undermount sinks with Delta® single post polished chrome faucets, shower with simulated subway tile surround, elongated toilet and convenient medicine cabinet for extra storage
- Secondary Baths feature cultured marble countertops with 4" backsplash, oval undermount sinks with Delta® two-handle center-set polished chrome faucets, tub/shower with simulated subway tile surround, elongated toilet and convenient medicine cabinet for extra storage (varies per plan)
- Powder Baths feature oval pedestal sinks with Delta® single post polished chrome faucets (undermount sinks and base cabinets at 3X powder baths)
- Laundry space with electric dryer hook-up

MODERN KITCHENS

- Stainless steel Whirlpool® appliance package includes 30" induction range with 4 burners and single oven, 30" built-in microwave/hood over range, and 24" stainless steel multi-cycle dishwasher
- European-style white thermofoil cabinetry with raised panel doors, adjustable shelving, and concealed hinges and brushed nickel pencil pull hardware

- 1 ½" mitered edge granite countertops with 6" backsplash (4" backsplash at Plan 3X to accommodate lower electrical outlets) available in Bengal White
- Sonetto® undermount stainless steel double-basin kitchen sink with Delta® Westville single handle pull-out faucet in chrome finish and food waste disposal
- Convenient roll-out trash & recycling cabinet with two bins

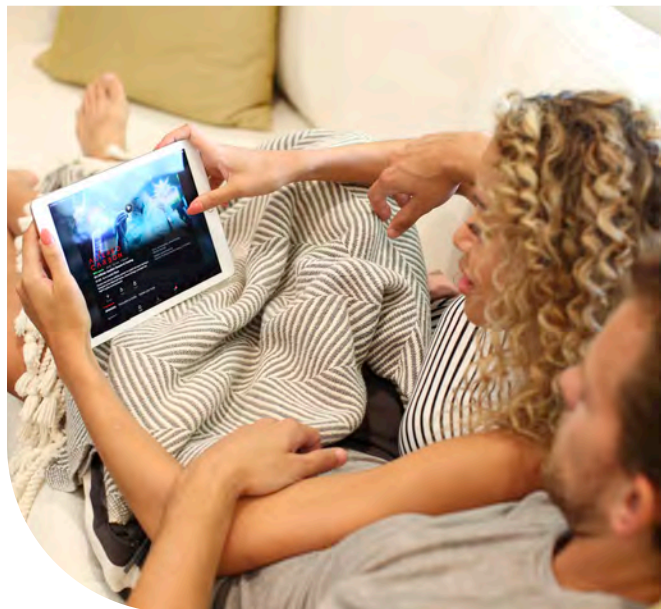
ENERGY EFFICIENCY

- Low-E dual glazed vinyl white-framed windows that provide solar control and visible light transmittance, resulting in utility cost savings with increased efficiency
- Central air conditioning and heating with programmable Honeywell® Lyric™ T6 smart thermostat, creates more balance and energy conscious consumption
- High-performance WaterSense® faucets, low-flow elongated toilets and showerheads conserve water
- Energy efficient Rheem® electric water heater with direct vent
- Pre-plumbed for future electric vehicle charging
- Included Solar Panel System to lease with payments or purchase:
 - All Plans: 3.69kW

TECHNOLOGY

Your new home is fully connected and includes myCommand smart home automation features:

- Schlage® Encode Plus™ Smart Wi-Fi deadbolt front door lock with illuminated touch screen allows for keyless entry
- Honeywell® Lyric™ T6 smart thermostat
- LiftMaster® WiFi-enabled garage door opener (supports Amazon Key)
- Wireless Access Points to optimize your wireless coverage throughout your home
- Fiber-optic cable connections for internet access that's three times faster than most high-speed services
- USB-C outlets at Kitchen and Primary Bedrooms for convenient way to charge your devices
- Technology pre-wiring with multiple enhanced Category 6 data wire to allow for phone lines and high-speed data connection
- Flatscreen TV outlet at Great Room. Primary Bedroom and Secondary Bedrooms include TV outlet
- Taexx Built-In Pest Control System with an accessible port, service at move-in



Brookfield Residential reserves the right, in its sole discretion, to change sales prices and add, delete or modify floor plans, elevations, maps, specifications, features, options, materials, designs, colors and incentives without notice or obligation. Square footage may vary and is approximate. Photographs may not represent actual homesites. Windows, patios, decks, garages and parking vary by plan type and elevation. Optional features are subject to construction cut-off dates. All maps, plans, landscaping, elevation and amenity renderings are artist's conception only, not to scale and not to supersede architectural plans or any exhibits a customer signs. As a homeowner at Bloom, you become a member of the Bloom Community Association that is supported by all residents in order to maintain the aesthetic integrity of the neighborhood, maintain certain common areas and administer other standards for the use and enjoyment of residents. You also become a member of the Edenglen Community Association that is supported by all residents in order to maintain the aesthetic integrity of the community, maintain certain common areas and administer other standards for the use and enjoyment of residents. Models do not reflect racial preference. Equal housing opportunity. CA DRE license #02155366. 02/2025.

Brookfield
Residential